

## What is the Luther Community Service Center?

The Luther Community Service Center is a nonprofit charity organization that distributes food to needy families and operates a store for the families to get free used clothing, furniture, household goods and other miscellaneous items. Without the help of the services provided by the Center, many families would not have enough food and other necessities to make it through the month.

### Fast Facts...

- We provide food, clothing, and other necessities to needy families.
- There is never a charge for any service offered.
- We are a 100% volunteer organization. We have no paid workers.
- We are a recognized 501 (c) (3) nonprofit organization.

### Community Service Center

205 E. 1st Street

P.O. Box 321

Luther, OK 73054

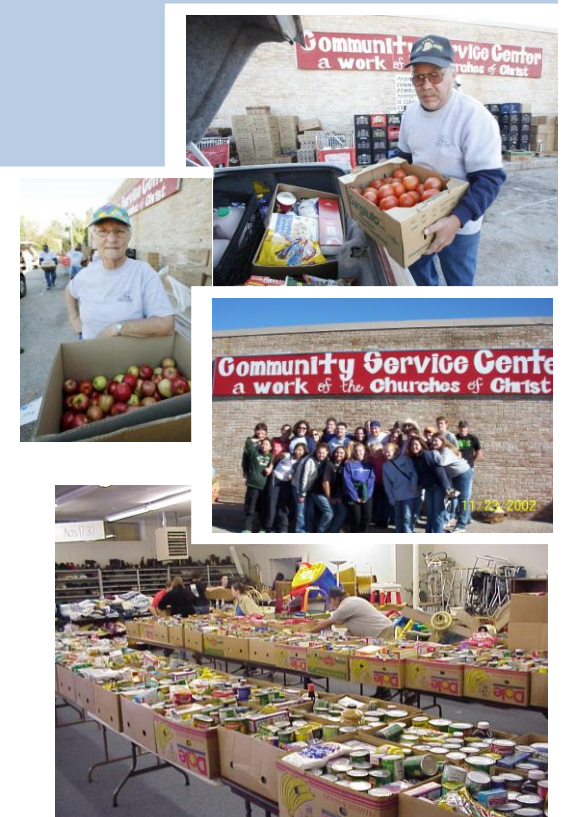
Phone: 405-277-3911

Email: [info@luthercommunityservicecenter.org](mailto:info@luthercommunityservicecenter.org)

Website: [www.luthercommunityservicecenter.org](http://www.luthercommunityservicecenter.org)

## Luther Community Service Center

A Work of the Churches of Christ



Tel: 405-277-3911

[www.luthercommunityservicecenter.org](http://www.luthercommunityservicecenter.org)

## Who We Are...

The Luther Community Service Center is a 501 (c) (3) nonprofit organization located in Luther, Oklahoma dedicated to helping disadvantaged Luther residents.

## What We Do...

The Community Service Center provides food each month for 150-160 Luther families (must provide proof of Luther residency with a utility bill serving a Luther address). One time emergency food assistance is provided for non-Luther residents.

## How We Do It...

The Service Center is supported by area Churches of Christ and has 20 - 30 regular volunteer workers - it has no paid workers. Regular volunteers include residents of Luther; students from Oklahoma Christian University of Science and Arts (Edmond, OK);

University of Science and Arts (Edmond, OK); students from Abilene Christian University (Texas); and individuals who have been required by the court to perform community service.

## Frequently Asked Questions...

**Q.** Are my contributions to the Community Service Center tax deductible?

**A.** Yes. The Community Service Center is a recognized 501 (c) (3) nonprofit organization.

**Q.** How can I help?

**A.** There are many ways that you can help support the Community Service Center and provide meals to those in need:

- **Donate online at** [www.luthercommunityservicecenter.org](http://www.luthercommunityservicecenter.org) (Donations may also be made in person or by sending a check or money order to P.O. Box 321 Luther, OK 73054.)

- **Volunteer your time.** Individuals and groups who want to volunteer should contact the Community Service Center at 405-277-3911 to set up a time to help.
- **Attend a Special Event.** See our events online.
- **Stay informed.** Join our Facebook Page.
- **Spread the word.** Tell your friends and neighbors about us and post information on your Facebook Page.

***Your help makes a difference!***